



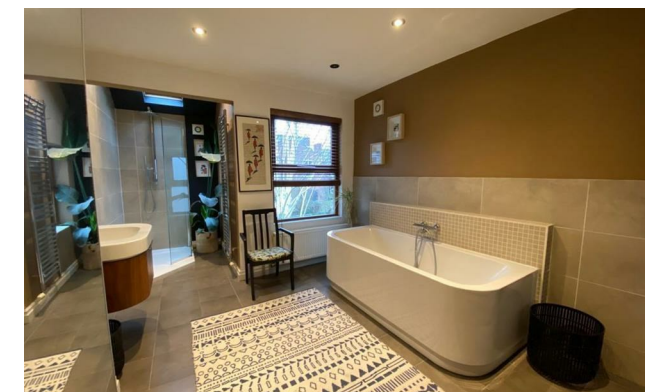
jordanfishwick

Whitelow Road
Manchester



Whitelow Road Manchester M21 9HG

£2,495 Per Calendar Month



The Property

**** AVAILABLE MARCH **** We are delighted to offer this stunning Victorian Terrace situated on a highly regarded road leading to Chorlton Green and the ever popular Beech Road boasting a selection of stylish cafes and bars. This beautifully presented 4 bedroom terrace, the property is over 4 Floors and offered on a fully furnished basis. The property benefits from a large landscaped garden to the rear with established plants and trees creating a private and tranquil outdoor extension to the house. The Ground floor comprises of entrance & hallway, two reception rooms with ornate fireplaces, offering stylish décor and furnishings throughout, large modern and fully fitted kitchen. To the first floor there are two beautifully presented double bedrooms and a large family bathroom all stylishly furnished and decorated to the highest standard, the second floor offers a third double bedroom again presented to a high standard. The basement offers one double bedroom and office space with a stylish bathroom. Gas central heating is installed throughout. Not available for Sharers.
*****To arrange a viewing please call 0161 860 4444

Directions

- Council Tax Band D - EPC E
- 4 Bedrooms
- 4 Floors
- Large Private Garden
- Highly regarded road
- Part furnished
- Available March

Postcode - M21 9HG

EPC Rating - E

Floor Area - sq ft

Local Authority - Manchester

Council Tax - D





These particulars are believed to be accurate but they are not guaranteed and do not form a contract. Neither Jordan Fishwick nor the vendor or lessor accept any responsibility in respect of these particulars, which are not intended to be statements or representations of fact and any intending purchaser or lessee must satisfy himself by inspection or otherwise as to the correctness of each of the statements contained in these particulars. Any floorplans on this brochure are for illustrative purposes only and are not necessarily to scale.

Offices at: Offices at Chorlton, Didsbury, Disley, Hale, Glossop, Macclesfield, Manchester Deansgate, Manchester Whitworth Street, New Mills, Sale, Wilmslow and Withington

410-412 Barlow Moor Road, Chorlton, Manchester, M21

01618604444^{8AD}

chorlton@jordanfishwick.co.uk
www.jordanfishwick.co.uk